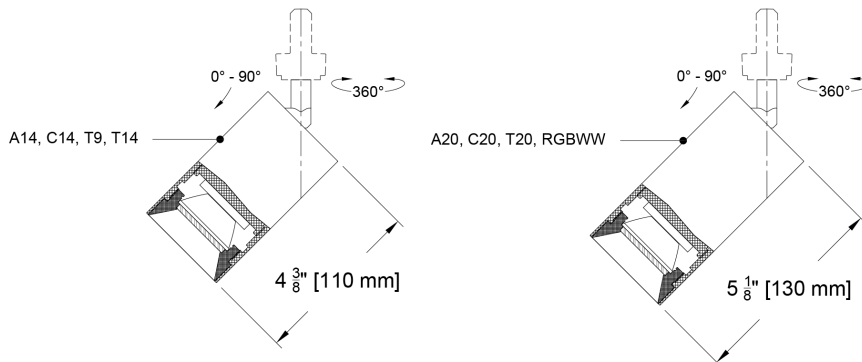


## The Yashar Family

Welcome to the Yashar Mains Scope track accent light, for use with our Mains track. The accent light, a derivative of the Scope Original Monopoint, features integral drivers mounted in the track adaptor. Available driver types include 0-10 volt, DMX, DALI-2 and phase dimming options. Sources include static white LEDs in a variety of color temperatures, as well as our proprietary Ambient Dim™ chips, & Tunable White. In addition, all of The finish options available in the Monopoint are available for the Yashar version.



PROJECT:

TYPE:

SPECIFIER:

DATE:

### Key Points (YSMH-SCO)

#### Housing

- Track accent head for use in Yashar Mains Track.
- Adjustable 360° degree rotation and 90° degree tilt.
- 40 finish options, including anodized, brass, painted + Custom/RAL#.
- Precision CNC machined aluminum in New Jersey.
- Track mounted with integral drivers in track adaptor fitting.

#### Source / Optics

- 4 beam spreads - 20°, 28°, 40° and 60°
- Up to 1307 delivered lumens.
- <2 MacAdams Ellipses (<2 SDCM) for fixed white.
- 2400K, 2700K, 3000K, 3500K, 4000K, Ambient Dim™ in 3 CCT ranges: 2700K-2200K, 3000K-1900K, & 3000-2200K RGBWW: 1800K-6500K
- 90+ CRI, 60+ R9 Standard, 95+ CRI, 90+ R9 available with Ambient Dim™ option
- Supports CA Tilte 24 Requirements to JA8 in most configurations.
- Lifetime: L87B3>55,000 hours at 40°C Ambient

#### Driver And Control

- 120 volt.
- 0-10 volt, phase, or DALI-2. DALI-2 control enables individual control of each fixture.
- For track mount heads, 0-10 volt dimming control provides single zone of dimming control on 120 volt (2 or 3 circuit track) as the circuits are combined on the 0-10 volt control side. For two circuit applications ELV/Triac drivers are available to dim each circuit separately as there is a separate neutral for each circuit. We do not recommend using the ELV/Triac drivers in three circuit applications, as the three circuits share a common neutral. Refer to YSMT cutsheets for details on voltage and circuiting.

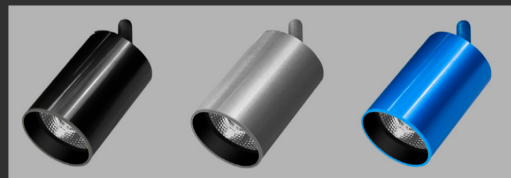
### Finish Options - See finish guide for full spectrum of colors

#### PXX- Powder Coat Paint examples



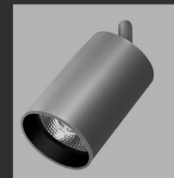
P14 White Paint P13 Moog Bronze

#### AXX- Anodize finish examples



A01 Black Anod. A32 Clear A20 Blue

#### AMXX- Matte Anodize



AM32 Clear

#### BXX- Brass finish


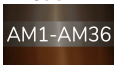




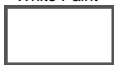



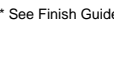


B05 Satin Brass

Ordering Codes

PROJECT: SPECIFIER:  
DATE: TYPE: QUANTITY:

Ordering Code Example: YSMH-SCO-C14-30-28-TD3-AM01-97L

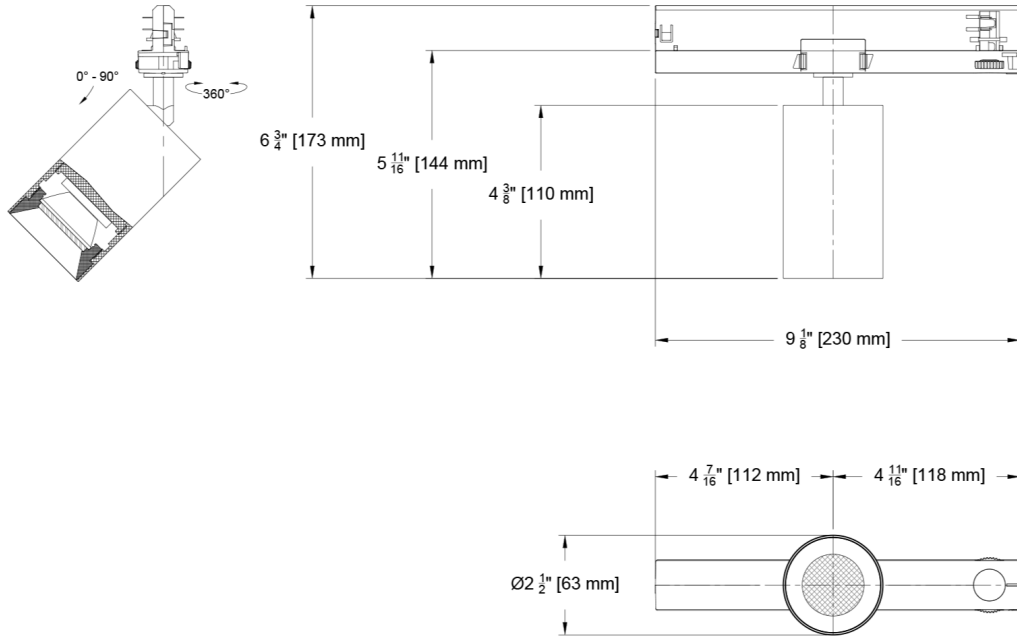
FIXTURE	SOURCE / WATTS	CCT	BEAM	DRIVER / CONTROL	HEAD FINISH	LENS ACCESSORIES
YSMH-SCO						
Yashar Mains Scope Original Track Head - YSMH-SCO	Citizen	24 2400K	20 Spot	TD1 0-10V 2.0%, (120-277V) linear	AM01 Black Matte Anodize^ 	Reflector (lamp) Media
	C14 ●● 14W 1292Lm* 90+CRI, 60+R9	27 2700K	28 Narrow Flood	TD2 DALI-2 1.0%, (120-277V) linear	AMXX Specialty Matte Anodize Color^ 	91L Solite
	C20 ●● 21W 1422Lm** 90+CRI, 60+R9	30 3000K	40 Flood	TD3 ELV/Triac 5.0%, (120-120V) linear	AM1-AM36 	97L Black Hexcel Louver
	Tunable	35 3500K	60 Wide Flood	TD4^ DMX 0.1%, UNV (120-277V) Universal DMX Driver/Controller RGBWW-DMX ^ INCLUDES DMX/RDM COMPATIBLE DRIVER WITH BUILT-IN DECODER - CONTROLLER BY OTHERS	A32 Clear Anodize^ 	XXL Other reflector (lamp) media*
	T9 90+CRI, 60+R9 Tunable White	40 4000K			AXX Specialty Anodize Color^ 	 
	T14 90+CRI, 60+R9 Tunable White	TW1840 1800-4000K Tunable White w/ TD2 & TD4			W White Paint 	
	T20 ●● 21W 1490Lm^ 90+CRI, 60+R9 Tunable White	TW2765 2700-6500K Tunable White w/ TD2 & TD4			PXX Specialty Paint Color* 	
	RGBWW	RGBWW			B05 Satin Brass^ 	
	RGBWW 13W 1346Lm 96+CRI, 93+R9 *E4 Only	R1865 1800-6500K RGBWW Dynamic Color Changing *TD4 Only			BXX Brass Finishes^ 	
	Ambient Dim™	Ambient Dim™			Note: Track adaptor furnished in White with W finish head. Other finishes furnished with a black track adaptor unless otherwise specified. ^Stem comes in selected color  * See Finish Guide	
	A14 ●● 15W 851Lm* 95+CRI, 90+R9	2722 * 2700-2200K *A14 Only				
	A20 ●● 21W 858Lm 95+CRI, 90+R9	3019 3000-1900K				
	●● Supports CA Title 24 compliance to JA8 requirements.  *Based on 28" Beam	3022 * 3000-2200K *A14 Only				

## Dimensions

### Yashar Mains Scope Track Head

Standard Mount | A14, C14, T9, T14

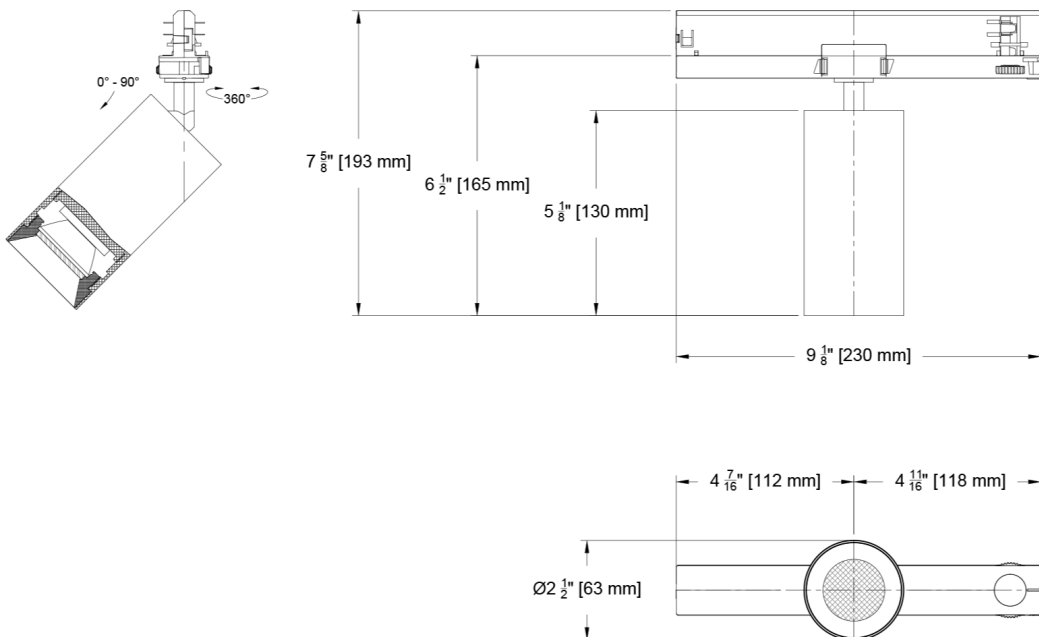
(YSMH-SCO-)



### Yashar Mains Scope Track Head

Standard Mount | A20, C20, T20

(YSMH-SCO-)

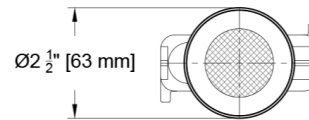
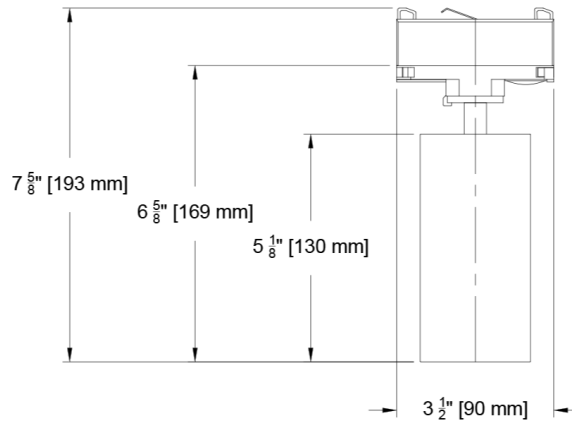
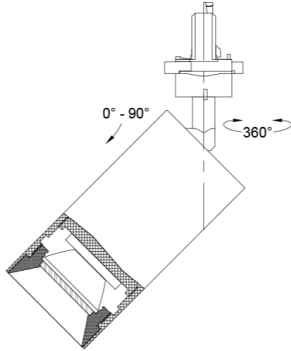


## Dimensions

Yashar Mains Scope Track Head

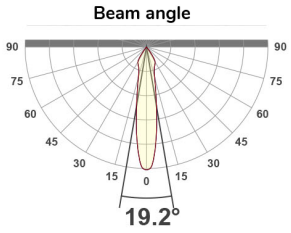
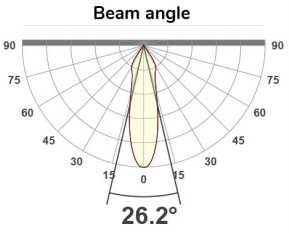
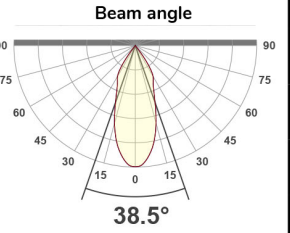
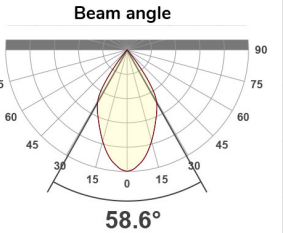
Standard Mount | RGBWW

(YSMH-SCO-)



Photometric Table

All data below are delivered lumens based on goniometer measurements of production representative product. All lumen values can vary +/- 10% from LED manufacturer rated nominal flux. The following combinations do not meet California Title 24 efficacy requirements - Ambient Dim 15°.

CYLINDER Beamspreads		20°				28°				40°				60°			
	System watts (W)	Delivered Lumens (lm)	Lumens/ Watt	Peak CD	10% Field	Delivered Lumens (lm)	Lumens/ Watt	Peak CD	10% Field	Delivered Lumens (lm)	Lumens/ Watt	Peak CD	10% Field	Del. Lumens (lm)	Lms/ Watt	Peak CD	10% Field
Citizen C14	14	1290	92	4733	68°	1292	92	3395	71°	1255	90	2296	74°	1307	93	1702	78°
Ambient Dim A14	15	851	58	3509	66°	810	55	2246	71°	783	54	1519	73°	836	57	1105	77°
CCT Multiplier																	
CCT	Citizen																
2700	0.95																
3000	1.00																
3500	1.02																
4000	1.03																

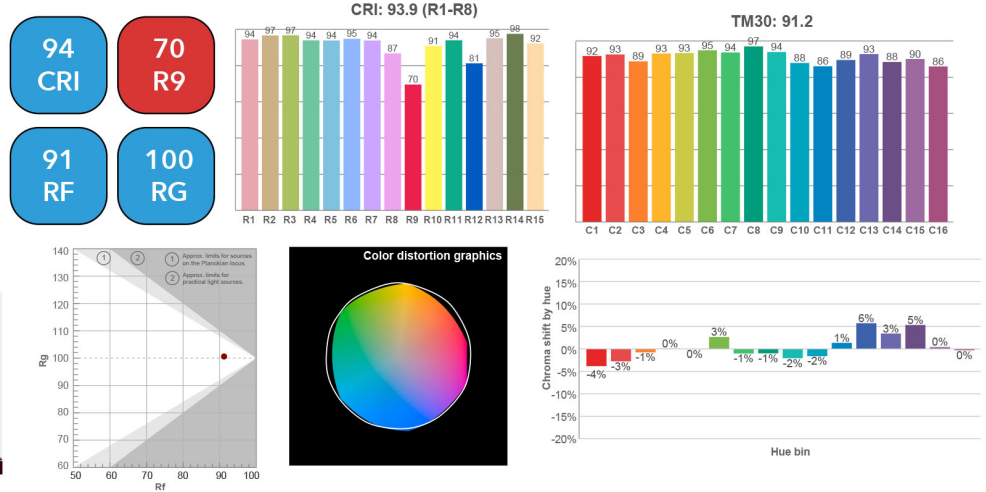
All Measurements are delivered lumens based on 3000K unless otherwise noted below. Ambient Dim measured at full output. ISO CD Plots based C14 Source.

## Color Data

All data below are delivered lumens. Color and flux information based on goniometer measurements of production representative product. All values can vary +/- 10% from LED manufacturer data range as listed on their datasheet.

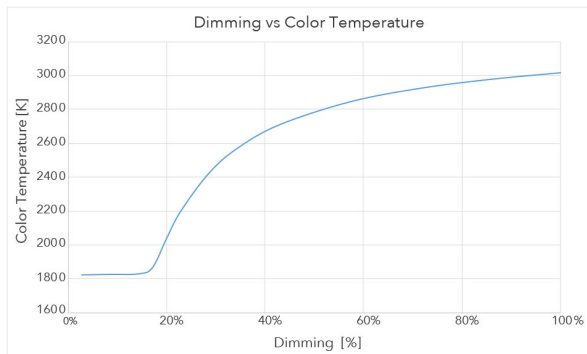
### Citizen Source C14

- <2 MacAdam Ellipse (<2 SDCM)
- 90+ CRI and RF
- 60+R9, Hue Bin 1

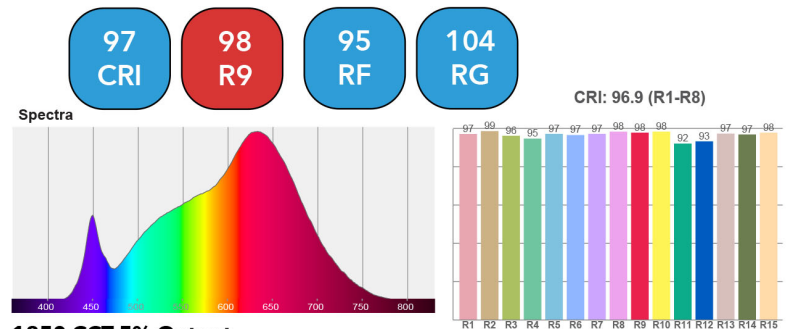


### Ambient Dim Source A14 (AD - 3000k to 1900k)

- <3 MacAdam Ellipse (<3 SDCM)
- 95+ CRI and RF
- 90+R9, Hue Bin 1
- Follows Black Body Locus through dimming range



#### 3000 CCT Full Output



#### 1850 CCT 5% Output

